



Westwood Heath
Residents Association

Westwood Heath Residents Association

22nd January 2019

Agenda

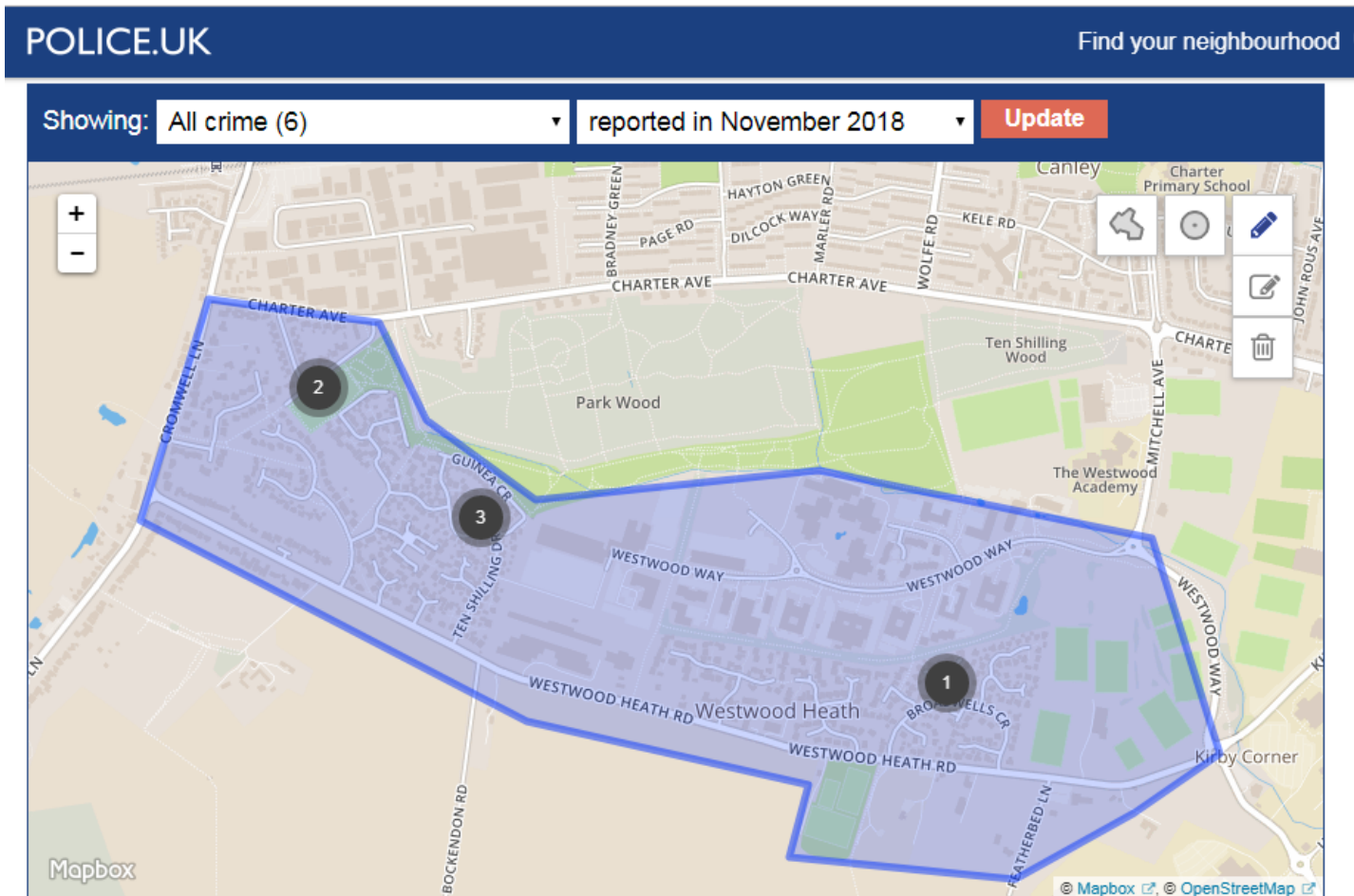
- West Midlands Fire Service – Paul Lawrie
- Crime and security
 - Streetwatch Scheme
 - Commercial Security Patrols
- Planning and development update
- Coventry population growth
- AOB

West Midlands Fire Service

- Paul Lawrie, Crew Commander

Crime and Security

<https://www.westwoodheath.org.uk/crime>



Crime and Security

- Police figures show that overall crime is reducing (comparative year to year)
- However, resident perception is an increase, and more brazen in approach
- Potential to deter crime in the area:
 - “Streetwatch” – self help
 - Commercial Security patrols



Streetwatch



- Police sanctioned and trained
- 5-10 volunteers needed across Westwood Heath
- Commitment is 2 hours per month
- Patrols are in pairs
 - Initially with PCSO support
- You can take non-dangerous dogs
- Training and yellow vests provided
- Initial training Thursday 24th Jan and 31st Jan
- Volunteers?

Commercial Security Patrols

- Based on a successful pilot in Sutton Coldfield
- Their scheme: (*Innovate security*)
 - Patrols on 3 (random) days, 3 patrols / day
 - Approx £25/patrol
 - Area smaller than WW Heath, single entrance
- Visible deterrent with signage, van and possible foot patrols
- No reported burglaries since in operation

Potential Scope

- Core service of regular patrols
 - Will need a critical mass of households to make it affordable
 - With 50% take-up, **very roughly** £5 / household / week
- Optional extension services (additional cost)
 - Key holding, alarm response, incident call-out, suspicious persons....
- Other alternatives
 - All night (e.g.) with van and dog 11pm-6am
- How to structure?
 - Suggest a core team to spec the service
 - Pilot in one smaller area

Security - Discussion

- Initial reaction?
 - Streetwatch
 - Would you participate?
 - Commercial patrols
 - Would you subscribe?
 - Target £5 / household / week ??

Streetwatch - Next steps

- Need 5-10 volunteers, including coordinator
- Initial training
 - This Thursday (24th) at Canley or 31st January
- Web login to log hours, yellow logo'ed vest
- Commitment 2 hrs / month

- Coordinator?

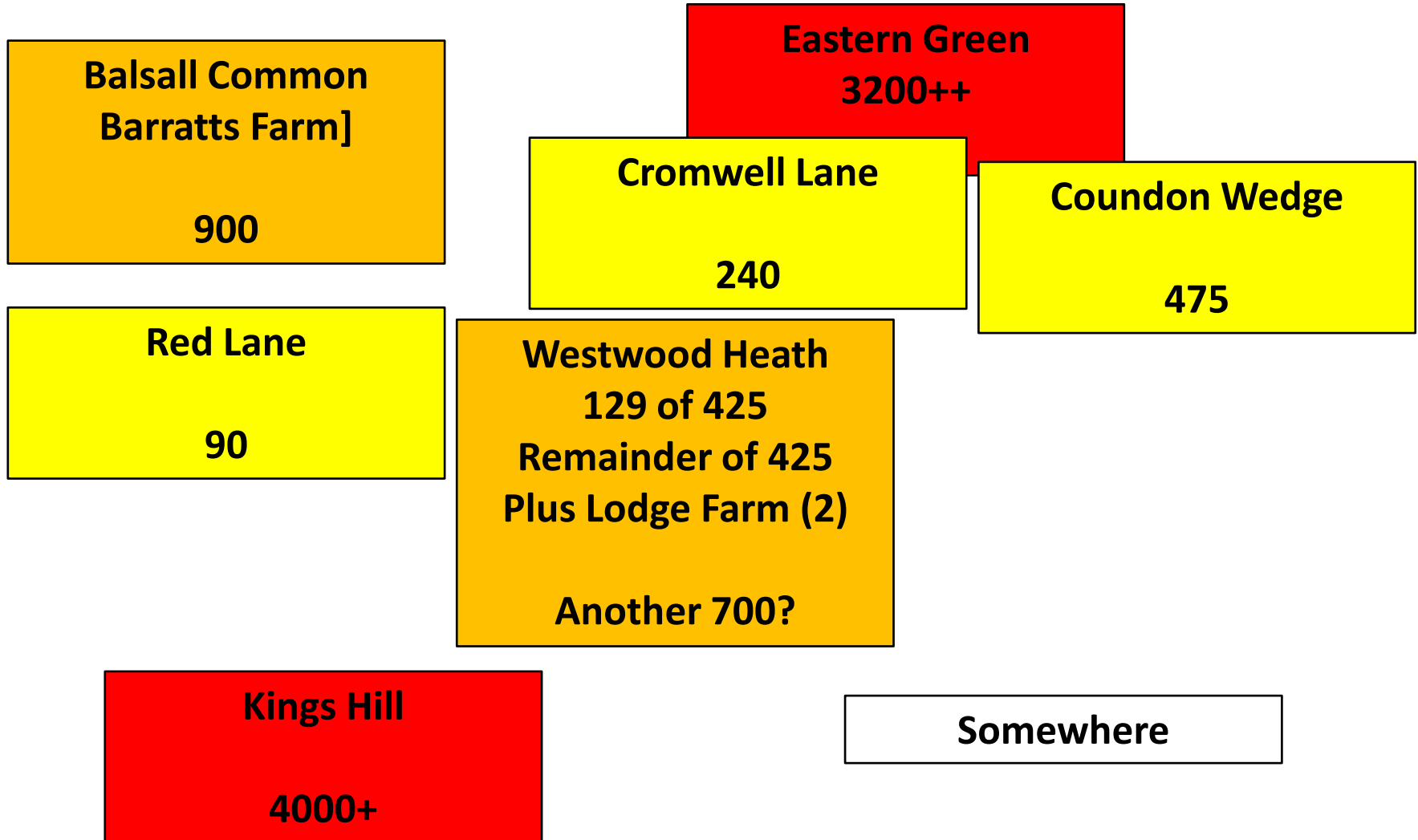
Commercial Patrols - Next steps

- Set up core team
 - Reps from interested areas
 - Commercial and financial support
- Spec out services
 - Analyse historical incident days / times
 - Quantify WWH households (600-700)
 - Identify menu of services & times of patrol
 - Options for subscribers / discounts for extended services?
 - Length of commitment
 - Flex number of patrols with varying number of subscribers
- Canvass residents
 - Street champions distribute proposal when complete
- Trial in one smaller area?

Planning Updates

- Other Local Developments
- University expansion and car parking
- Crest Nicholson Development
- A46 Link Road

Other local residential developments



University Expansion

- Interim “Hybrid Plan” given the go-ahead
- 1000 extra car park spaces approved
- 1300-place Kirby Corner car park opens 28th January

Kirby Corner Car Park Opening

Kirby Corner car park will open for staff permit holder use from 28 January.

Read on for information about using the new car park, and for other parking updates as we continue the shift to a smaller number of large car parks around the edges of campus to reduce traffic and improve the campus environment.

As the architect drew it...



...and as it appears in reality

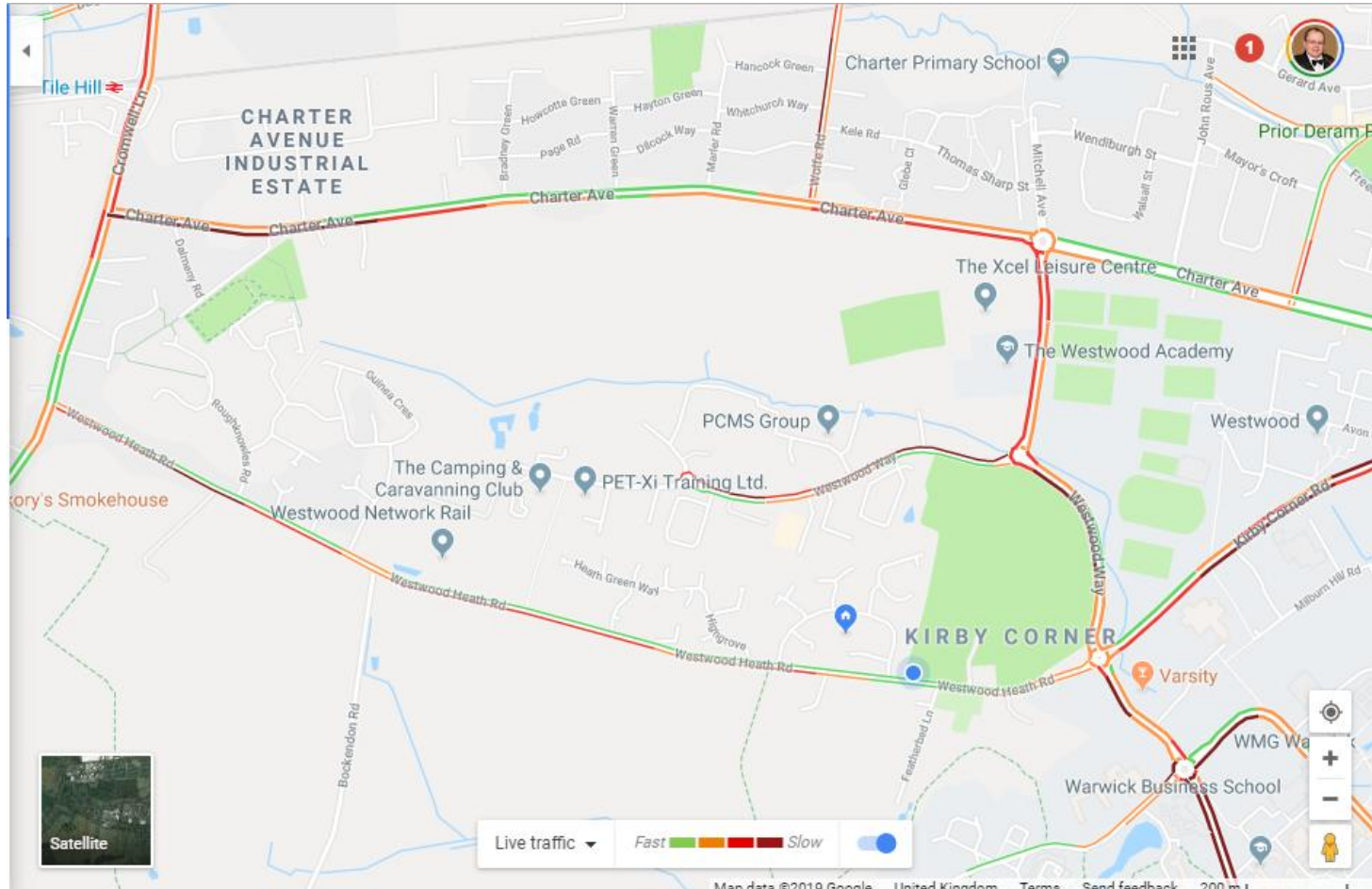


...and as it appears in reality

The Car-buncle



This evening's traffic at 6pm



Crest Nicholson Development

- Outline permission for 425 houses
- Limited to initial tranche of 129 due to traffic and road issues
- Section 106 agreement brings:
 - Revised Cromwell Lane Junction
 - Pedestrian Crossing
 - Cycle route to Kirby Corner via business park
 - Cycle route to Tile Hill station?
- These items to be complete before first occupation
- Starting soon – this week?

Lodge Farm



Lodge Farm – 2 houses



A46 Link Road

- Planning permission given for Phase 1
- Traffic order created
 - Withdrawn due to objections and secretary of state authorising public inquiry
- Traffic order reissued Jan 4th
 - Closing date 18th February 2019 for objections
- WHRA Position
 - Needs to be assessed in the context of overall Phase 2 (Westwood Heath) and Phase 3 (Balsall or Eastern Green) link

Coventry Population growth

- Local Plan expansion
 - Predicated on unsubstantiated growth
 - Students assumed staying
- Comparative study done on key indicators
 - GP, Hospital numbers, utility consumption
- No correlation at all!!
- Will publish report on web page and Facebook

AOB

- Traffic
 - Police have promised help with Community Speed Watch
 - PCSO assigned