



Westwood Heath
Residents Association

Westwood Heath Residents Association

Ian Stevenson – Chair
24th September 2019



Westwood Heath
Residents Association

24th September 2019

Agenda

- Welcome
- Warwick University update
- Police update (subject to operational commitments)
 - Plus Streetwatch
- Message in a Bottle
- Defibrillator
- Planning Update inc HedgeGate & A46 Link Road
- HS2
- History Group

- AOB



Westwood Heath
Residents Association

University of Warwick

- Welcome to Jo Handford

Police update

- Paul Jackson, PCSO
 - Subject to operational commitments

Police update

- Paul Jackson, PCSO
 - Subject to operational commitments
- Streetwatch
 - Very active, 18 volunteers
- WhatsApp Groups
 - “BroadwellsWatch” – any others?
 - (60 members – real-time scoundrel alerts!)

Message in a bottle

- Lions Club Initiative
- Key medical and personal details
- Kept in a bottle in the fridge
- Sticker for front door / window alerts emergency personnel
 - They know where to look!
- Pick them up tonight!



Defibrillator(s)



- Proposal to locate one or more in the community
- Project to look at:
- costing (~£1000 + annual maintenance) per device
- Siting options
- Funding – crowdfunding and business
- Someone to lead??

Planning Matters

- Crest Nicholson Development
 - Initial tranche of 129
- Hedge Clearance
 - Not by initial phase?
 - Being cleared for “road widening” (access islands)
 - WDC “Not a planning matter”
 - Natural England have granted licence
- Crest invited to RA meeting



A46 Link Road

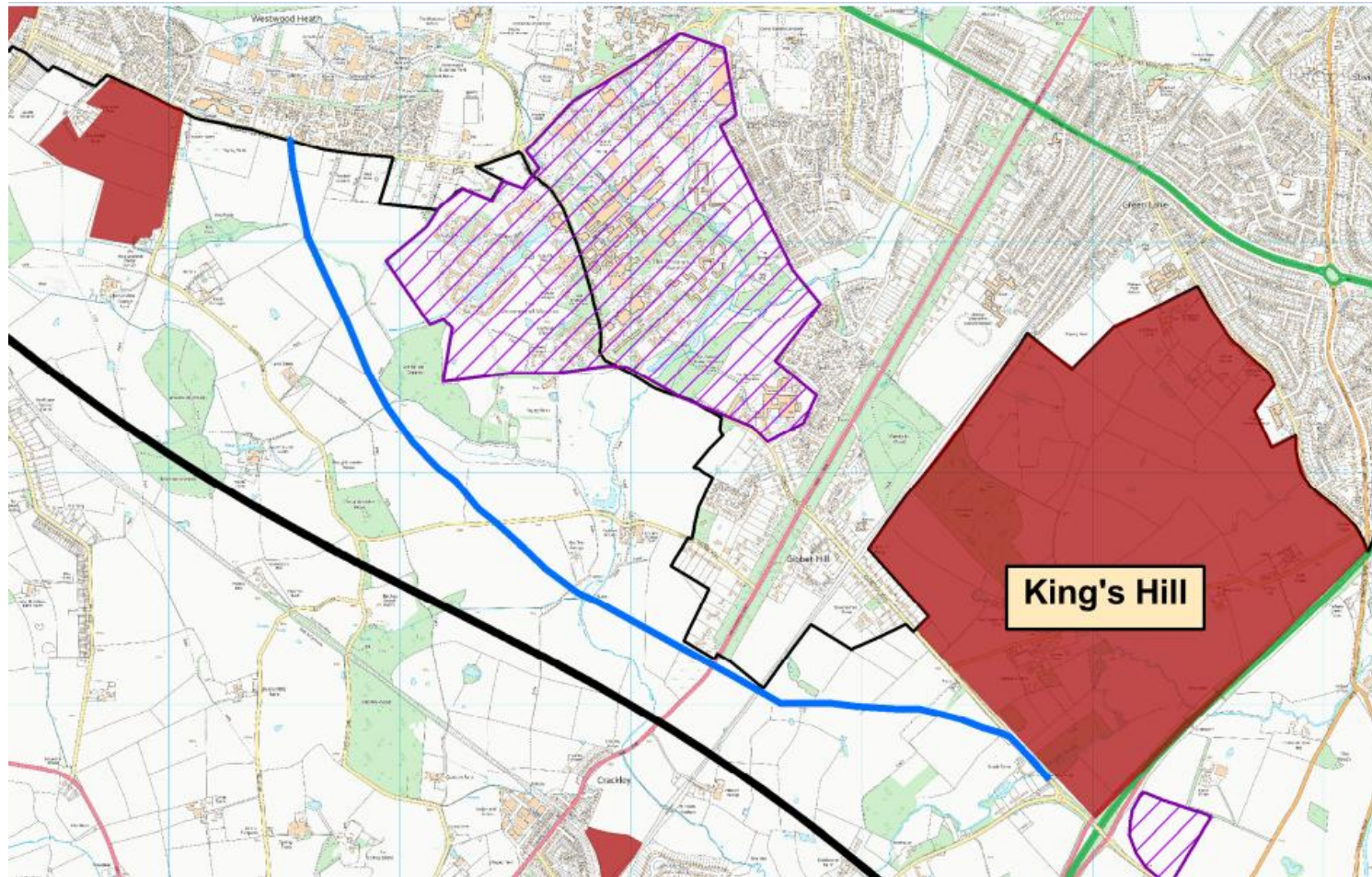
- Last update Dec 2018
 - Phase One – A46 Junction
 - “start onsite spring 2019”
 - “Completion Autumn 2020”
 - Phase Two
 - Indicative route surfaced following FOI request
 - Construction targeting 2024

A46 Link Road

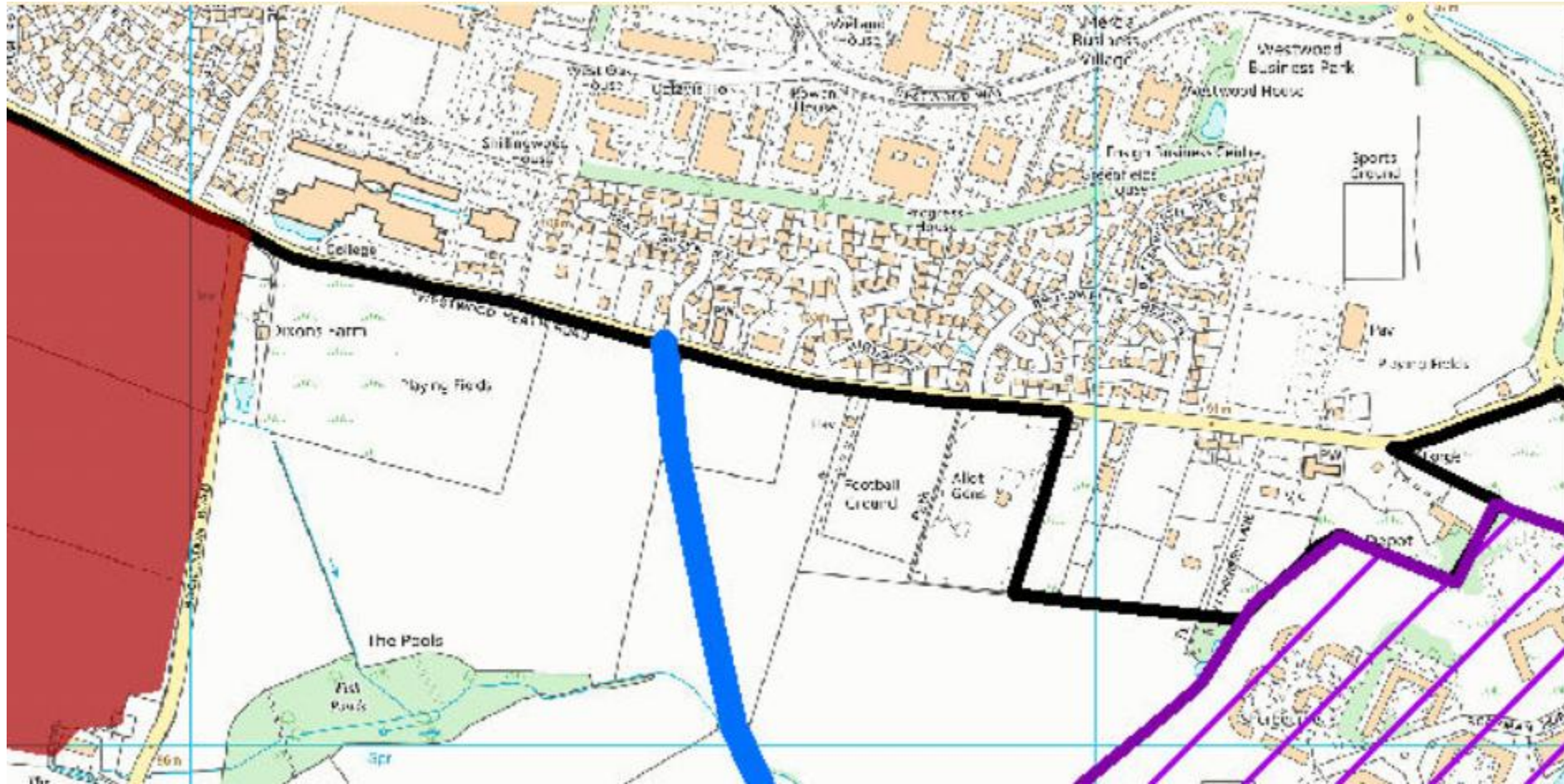
- Update WCC Cabinet September 2019
- Phase 2 renamed “A46 Strategic Link Road”
- Approved for development
- Next stage includes public consultation Winter 2019 / 2020
- Construction complete 2024 / 2025
- Softcopy Link for online use:

<https://democratic.warwickshire.gov.uk/cm15/Document.ashx?czJKcaeAi5tUFL1DTL2UE4zNRBcoShgo=CMvO4uaT2YU66k2FVBPVwZrE4I6yig3HOpiP1n2UP8kmAaURDaqC2w%3d%3d&rUzwRPf%2bZ3zd4E7lkn8Lyw%3d%3d=pwRE6AGJFLDNlh225F5QMaQWctPHwdhUfCZ%2fLUQzgA2uL5jNRG4jdQ%3d%3d&mCTIbCubSFfXsDGW9IXnlg%3d%3d=hFflUdN3100%3d&kCx1AnS9%2fpWZQ40DXFvdEw%3d%3d=hFflUdN3100%3d&uJovDxwdjMPoYv%2bAjvYtyA%3d%3d=ctNJFf55vVA%3d&FgPIIEJYlotS%2bYGoBi5olA%3d%3d=NHdURQburHA%3d&d9Qjj0ag1Pd993jsyOJqFvmyB7X0CSQK=ctNJFf55vVA%3d&WGewmoAfeNR9xqBux0r1Q8Za60lavYmz=ctNJFf55vVA%3d&WGewmoAfeNQ16B2MHuCpMRKZMwaG1PaO=ctNJFf55vVA%3d>

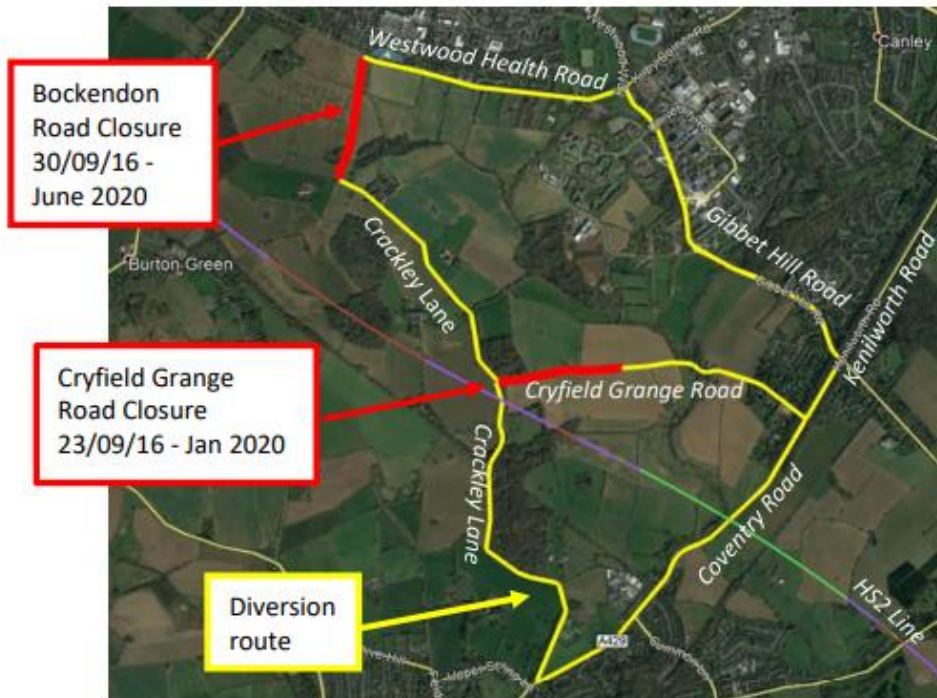
A46 Strategic Link Road to Nowhere



Indicative route – Junction with Westwood Heath Road



HS2



- Bockenden Rd closure
 - To June 2020
 - Enabling works for the “haul road” – same route as railway
- Work continues despite government review

If you have a question about HS2 or our works, please contact our helpdesk on 08081 434 434 or email HS2enquiries@hs2.org.uk

History Group

- Led by Jill Kashi
 - “Monday memories” on Facebook
 - Website or blog to be developed

Communications



Westwood Heath Residents Association
A Voice for Our Community

August 2019

Welcome to the Summer Newsletter from Westwood Heath Residents Association (WHRA). Much has been going on in the background, following up on all the changes that are planned for our area. This Newsletter aims to bring out some of the more interesting local activities.

Planning

Many of you will know that there are lots of changes being discussed for the area within and around Westwood Heath, and it is these changes that prompted a Residents Association to be set up in order to represent the views of this thriving community. Alongside other local Residents Associations it gives us the chance to influence the planning activities of Coventry, Warwick and Solihull councils, and to help mould the plans to better suit our local environment.

To summarise, the plans that are currently being considered or are expected to be made in the near future, are those listed below:

- H22
- Housing on Westwood Heath Road, approximately 425 homes – planning approved
- Housing behind Cromwell Lane, around 250 homes planned – planning not submitted
- Housing at the top of Red Lane, around 90 homes currently being built
- Car Parking at Tile Hill railway station
- Link Road between the A46 and Salsall Common

The WHRA has set up a website to collate and share the information on these projects, and whilst it is still in its infancy, useful information can be found there already. For instance, there are links to both the Warwick Council planning department and Coventry Council planning department pages on the Westwood Heath Road housing development.

The WHRA website can be found by using the following link:
<https://www.westwoodheath.org.uk/>

There are also Facebook, Twitter and Instagram accounts for those who use such social media, and links are accessible from the website. If you are already following us on Facebook, why not come along to our meetings and have your say? Or consider joining us?

The meetings planned for the coming year are:

Tuesday 24th September 2019, Tuesday 10th December 2019,
Tuesday 10th March 2020 and Tuesday 16th June 2020.

All meetings are held at the Westwood Club on Westwood Heath Road, starting at 7.30pm. The meetings are for interested residents to discuss the issues facing Westwood Heath, and to join in discussion on possible activities including social events. It also to give the local

- Newsletter Distributed September 2019
 - Subject to feedback, will be published approx quarterly
- Thanks to Ian Harrop for putting it together

Any Other Business

- WHRA Committee – Help Wanted!
 - Membership Secretary
 - HS2 Liaison